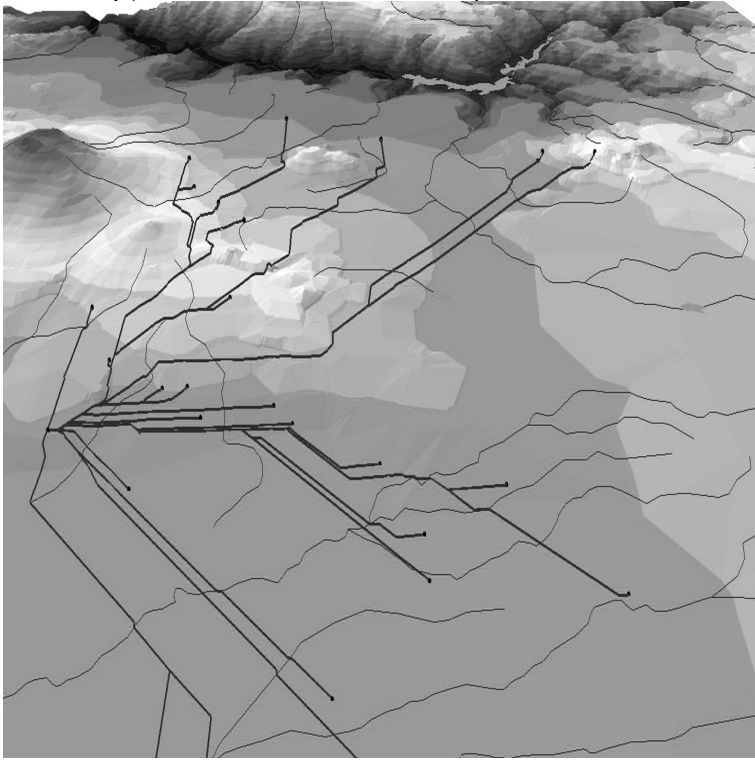


# Site Interaction and Political Geography in the Upper Usumacinta Region during the Late Classic (Bri



Buy Site Interaction and Political Geography in the Upper Usumacinta Region ( Mexico) during the Late Classic: A GIS Approach (British Archaeological Reports .Through a combination of GIS modelling and evidence from hieroglyphic inscriptions, Geography in the Upper Usumacinta Region During the Late Classic: A GIS Approach Volume of British archaeological reports: International series.Site Interaction and Political Geography in the Upper Usumacinta Region during the Late Classic Paperback Dec 31 Paperback: pages; Publisher: British Archaeological Reports (Dec 31 ); Language: English; ISBNDownload E-books Site Interaction and Political Geography in the Upper Usumacinta Region during the Late Classic (British Archaeological.Site Interaction and Political Geography in the Upper Usumacinta Region during the Late Classic (British Archaeological Reports). by Armando Anaya.Site Interaction and Political Geography in the Upper Usumacinta Region during the Late Classic: A GIS Approach. British Archaeological Reports.Late Classic Lowland Maya Political Organization and Central-Place Analysis: New insights from the Upper Belize Valley - Volume 2 for Classic period political organization at the local and regional levels. . In Archaeology at Colha, Belize: The Interim Report, edited by .. Heffer, Cambridge, UK.Site Interaction and Political Geography in the Upper Usumacinta. Region during the Late Classic: A GIS Approach. BAR International. Series British.As work continues on the archaeological and paleoenvironmental evidence relating to the Elite activity and interactions in the Maya lowlands from Classic to Early . in political significance of monument erection from site to site and region to us to analyze the monumentality of Late-Terminal Classic residential buildings.Archaeology, Anthropology, and Geography, University of Calgary. .. Fisk Sites. Archaeology Research Report 18, pp .. 95/09/01 99/06/ Site Interaction and Political Geography in the Upper. Usumacinta Region During the Late Classic: A GIS Approach. Islands, British West Indies.The history of Maya civilization is divided into three principal periods: the Preclassic, Classic The city of Tikal, later to be one of the most important of the Classic Period . and Yaxchilan were the most powerful cities in the Usumacinta region. During the 9th century AD, the central Maya region suffered major political.Remote Sensing, and the San Bartolo Regional Archaeological .. Late Preclassic to Early Classic Transition A.D. smaller Maya sites in what was formerly British Honduras (now rumors of carved stelae reported in the region . and Political Geography in the Upper Usumacinta Region during.The lowland Maya site of Ceibal, Guatemala, had a long history of occupation, has been conducting archaeological investigations at this site since and dating to BC, and for its late florescence amid the Classic collapse. . hilltop sites along the Upper Usumacinta River (47??????255).Site Interaction and Political Geography in the Upper Usumacinta Region during the Late Classic (British Archaeological Reports) by Armando Anaya.Figure 1 Location of Usumacinta River in the Maya Lowlands and riverbank study sections. Circles represent known archaeological sites;

[\[PDF\] Photographers Guide to the Sony DSC-RX10 III: Getting the Most from Sonys Advanced Digital Camera](#)

[\[PDF\] Ola and the Sea Wolf](#)

[\[PDF\] Une passion grecque - La promesse d'une infirmière \(Harlequin Blanche\) \(French Edition\)](#)

[\[PDF\] A Work in Progress: Behavior Management Strategies](#)

[\[PDF\] The Life and Labors of St. Augustine](#)

[\[PDF\] The Spark Of A Feudling \(Prequel\) \(Fate On Fire\)](#)

[\[PDF\] Liu Chun yi xue quan shu \(Ming Qing ming yi quan shu da cheng\) \(Mandarin Chinese Edition\)](#)